

**Wall of Honor 1995**

**Dr. Richmond Barbour Class of 1930**  
**Artha Tyler Barbour Class of 1928**



**Richmond:** Assistant Superintendent of San Diego City Schools; Director of Guidance of City Schools; Elementary School Principal; Newspaper Columnist who wrote *Parents' Corner* and *You and Your Problems*

**Artha:** Inspiration for thousands of San Diegans through her teaching, scouting activities and volunteerism

# **Julia Bowman Robinson**

**Class of 1936**



**Mathematics Professor U C Berkeley**

**One of Nation's  
First Female Ph.D. Mathematicians**

**President** **American  
Mathematical Society**

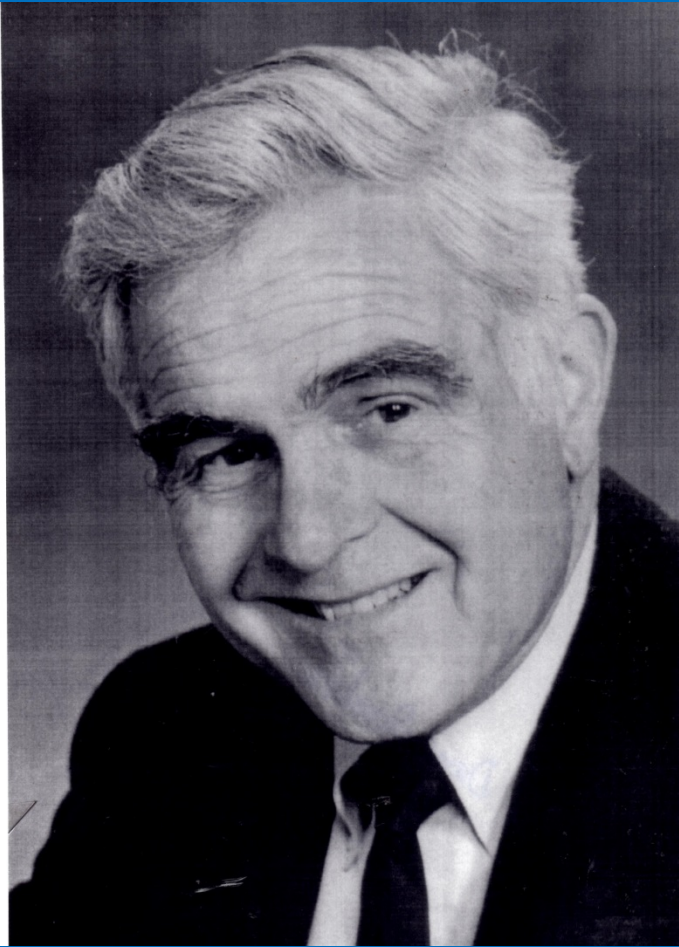
**Selected Among 100 Most Outstanding  
Women in Nation**

**Member** **National  
Academy of Sciences**

**Co-Solver** **Hilbert's  
Tenth Problem**

# **David A. Sanchez**

**Class of 1950**



**Vice Chancellor  
Texas A & M University**

**Deputy Director** **Los**  
**Alamos National Laboratory**

**Vice President Lehigh University**

**Assistant Director  
National Science Foundation**

**Ph.D in Mathematics**

**55 Mathematics and Science Publications**



# **Joseph Schloss**

**Class of 1944**



**President** **North**  
**Park Business Association**

**President North Park Lions Club**

**Volunteer of the Year**  
**California Little Leagues**

**Little League Manager** **for**  
**four decades**

**Chairman** **Three**  
**1944 SDHS Reunions Chairman**  
**North Park Lions Club**  
**Charity Committee**

# **Paul T. Smith**

**Class of 1940**



**Staff Pianist**

**Warner**

**Brothers and NBC**

**Pianist Conductor for Steve Allen, Ella Fitzgerald, Sammy Davis, and Pat Boone**

**Television Show Credits:**

**Merv**

**Griffin, Dinah Shore, Golden Girls, Happy Days, Carol Burnett, Laugh-In**

**Accompanist: Edye Gorme,**

**Bing**

**Crosby, Dorothy Kirsten,**

**Joni James,**

**Steve Lawrence,**

**Toni Tennile,**

**Joannie Summers,**

**Jo Stafford, Helen**

**Forrest,**

**Margaret Whiting**